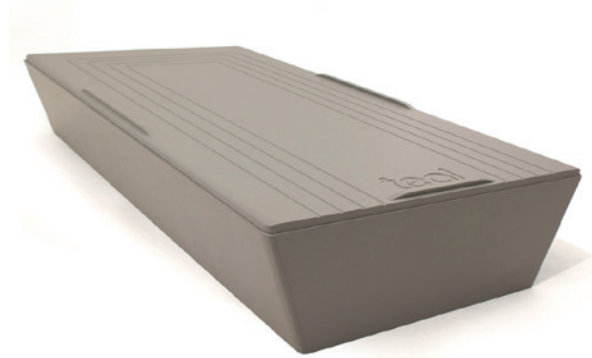


Myla/BDMY01

Myla freestanding bed is a secure, extremely durable new addition to the challenging environment collection. Smooth, round profile edges ensure enhances safety and security.



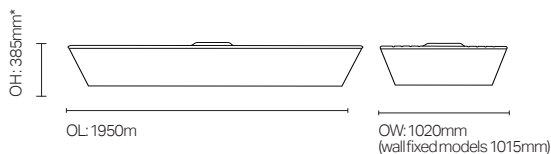
Standard Features

- Freestanding bed with X specification as standard
- Durable MDF vinyl wrapped construction
- 22mm soft edge top
- Channelled platform allows easy cleaning and air to circulate under the mattress
- Sloping sides enable easy staff access for cleaning or assisting a service user and

- aid sit-to-stand movement
- Waterfall edging around platform/ base prevents fluid ingress and improves cleaning
- Internal support sections provide enhanced durability and strength
- Integral mattress retainers
- Bed weight 78kg
- Max load 220kg (35st)

Optional Features

- Freestanding central version or wall fixed
- Enclosed underside option to prevent misuse and concealment
- Floorstanding headboard
- Finish options: standard finish Graphite Grey, Pippy Oak (vinyl wrapped & laminated) or white KYDEX® Thermoplastic sheet



*370mm to mattress platform

Headboard: OH: 850mm OW: 1025mm OD: 18mm Height Above Bed: 480mm

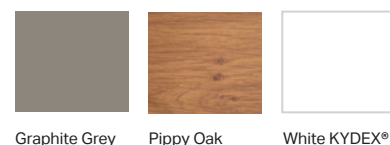
Environmental Product Analysis

Recyclability: 99%

Recycled Content: 45.15%

MODELS

- BDMY01 Central freestanding
- BDMY02 Central wall fixed
- BDMY03 Left hand wall fixed
- BDMY04 Right hand wall fixed
- BDMY05 Floor standing headboard



Graphite Grey

Pippy Oak

White KYDEX®