

TAPO02X PORTOBELLO

Portobello is a distinctive range of security dining and coffee tables with extreme specification as standard, for multi-environment use including high security.

- Conical design for multi-environment use, including high security
- Difficult to grasp, manoeuvre, manipulate, pick up
- Fully upholstered sides with double stitched seams for strength. No gaps to pick/pull upholstery
- Soft radiused corners for added safety
- All fixings hidden
- Standard weighting 135kg



PRODUCT SUMMARY

Scope of Assessment:

From extraction of raw materials through to production of the final furniture unit (cradle to gate).

See page 2 for more details.

Data Used:

Primary data was used wherever possible including for energy use during the core module.

All secondary data was obtained from the Ecolnvent database, used in conjunction with SimaPro 7.3.2, using European data only.

Functional Unit:

A Seating solution designed and manufactured for a useful life of approx 10 years +.

See website for warranty information.

MATERIAL DECLARATION

Material	Amount (kg)	Total (%)
Fabric	2.00	3.80
PU Foam	0.10	0.19
Plywood	12.00	22.77
MDF	27.00	51.23
Mild Steel	7.50	14.23
Fibreglass	4.00	7.59
Steel	0.10	0.19

ENVIRONMENTAL SUMMARY

Global Warming Potential (Kg Co2 Eq):	84.20
Recycled Content (% By Weight):	31.95
Total Energy Consumption (MJ):	2898.04
Recyclability (% By Weight):	99.00
Date of Production:	October 2019

ENVIRONMENTAL PRODUCT ANALYSIS

This Environmental Product Analysis has been created in accordance with, and following the principles of ISO14025 and ISO14044.

All the Life Cycle Analysis data has been compiled, processed and verified by Oakdene Hollins Ltd.

Compilation and processing of LCA data performed by Dr. Dan Skinner (Oakdene Hollins Ltd.)

Verification of LCA and environmental data performed by Dr. Adrian Chapman (Oakdene Hollins Ltd.)

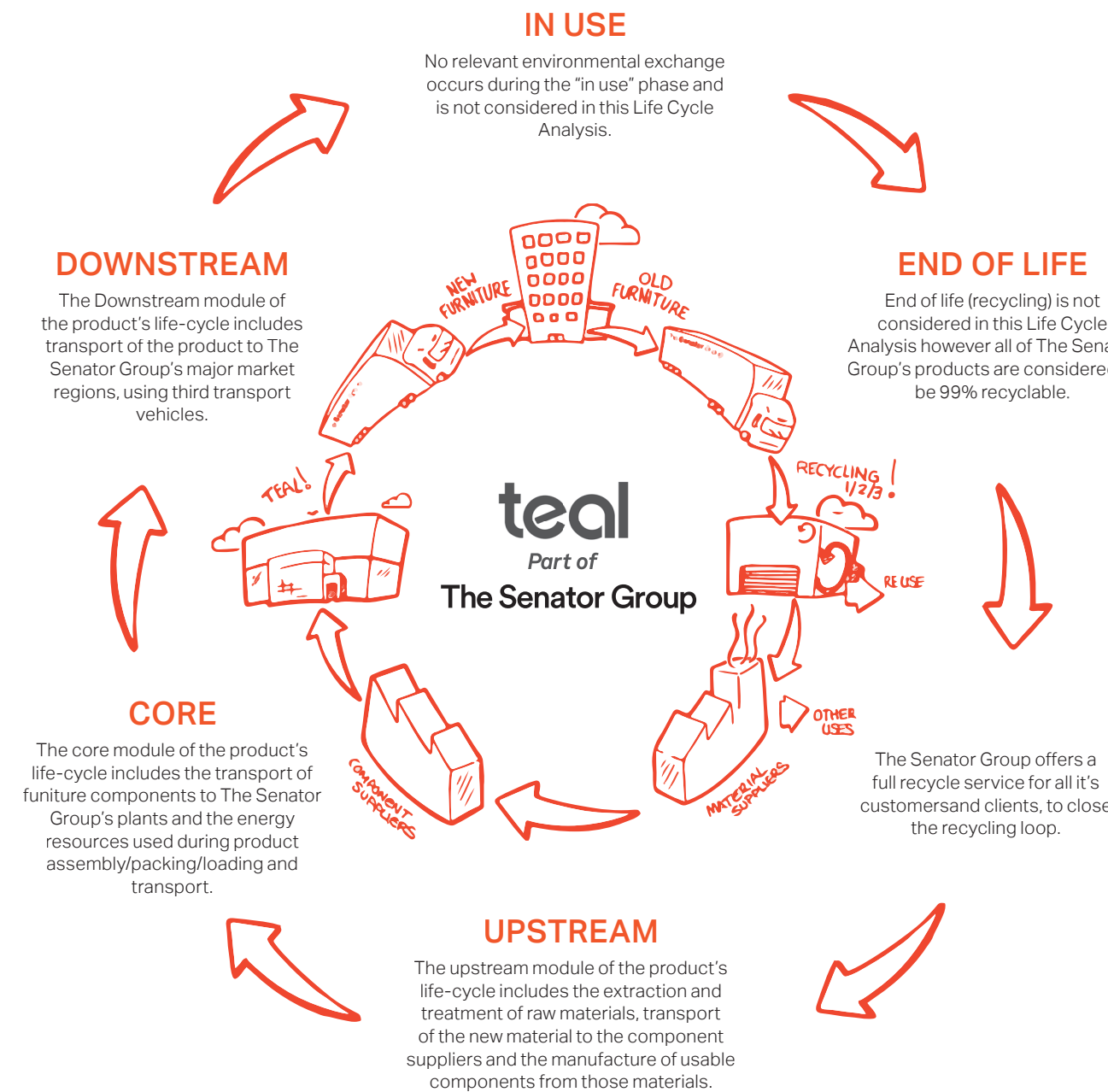
SUSTAIN

The Senator Group has for many years acknowledged that the key word upon which to focus our attention is Sustainability rather than Recyclability in pure isolation.

Our business takes a truly holistic approach to the design, manufacture, supply and reclamation of our products. We see this as a cyclical process. From design to manufacture, use and reclamation we aspire to minimise all environmental impacts of The Senator Group's products and processes.

We harvest the resources back from the retired products then remanufacture or reintroduce the materials into our component manufacturers supply chain.

We believe in taking responsibility for our own actions ourselves, wherever possible, rather than relying on third parties, or abdicating our responsibilities by offsetting. The process of Sustainability is a cyclical one we understand this and we actively pursue this in everything that we do.



SYSTEM BOUNDARIES

Resource (Kg)	Upstream	Core	Downstream	Total
From the Air	110.68	1.29	0.00	111.97
From the Ground	49.77	19.75	2.11	71.63
From The Water	00	0.00	0.00	0.00

ENERGY CONSUMPTION

Resource (MJ)	Upstream	Core	Downstream	Total
Biomass	1222.97	14.24	0.05	1237.26
Hydro	24.75	4.40	0.26	29.41
Solar	0.05	0.00	0.00	0.05
Wind	3.16	1.37	0.01	4.54
Non-Renewable Energy (MJ)	1358.10	243.96	24.72	1626.78
Total	2609.03	263.97	25.04	2898.04

ENVIRONMENTAL IMPACT POTENTIAL

Resource	Upstream	Core	Downstream	Total
Global Warming (Kg CO2 Equivalents)	69.12	13.63	1.45	84.20
Acidification (Kg SO2 Equivalents)	0.35	0.05	0.01	0.41
Eutrophication (Kg PO43 Equivalents)	0.01	0.00	0.00	0.01
Ozone Depletion (Kg CFC 11 Equivalents)	0.00	0.00	0.00	0.00
Photochemical Smog (Kg C2H4 Equivalents)	0.03	0.00	0.00	0.03

TOXIC EMISSIONS

Resource (Kg)	Upstream	Core	Downstream	Total
From the Air	99.71	391.87	142.04	633.62
From the Ground	0.06	0.04	0.02	0.12
From The Water	8.74	6.95	2.11	17.81

RECYCLED CONTENT

Material	Recycled Content of Material (% by weight)	Recycled Content In Product (% by weight)
Material	Amount	Percent of Total
Fabric	50.00	2.00
MDF	45.00	22.95
Mild Steel	50.00	7.00
Steel	50.00	
Total		31.95

CERTIFICATES

Description	Accreditation	First Certified
Quality Assurance	ISO 9001	Certified 1991
Environmental Management	ISO 14001	Certified 2001
Chain of Custody	FSC*	Certified 2003
Sustainability	FISP	Certified 2006



FURNITURE INDUSTRY SUSTAINABILITY PROGRAMME (FISP)

Awarded by FIRA, this sustainability certificate is designed to monitor all sustainability aspects of a company's facilities and operations. The Senator Group achieved one of the first sustainability certifications within the furniture industry – a public declaration of our commitment to improving our performance in every possible way.

ENERGY MANAGEMENT:

External proof that Senator has implemented a robust system to monitor all energy usage and have a process to continually minimise energy usage.

We believe Senator was the first company in the furniture industry to achieve this standard.

CHAIN OF CUSTODY

Independent certification to prove Senator only purchases Wood/MFC/MDF/Chipboard from manufacturers who can prove they purchase their raw wood from sustainable sources.

ENVIRONMENTAL MANAGEMENT

From extraction of raw materials through to production of the final furniture unit (cradle to gate). See page 2 for more details.

THE THREE R'S

Senator is committed to continually improving the sustainability of all environmental aspects within our business. To meet both international standards and our own environmental targets we apply the three R's principle-

Whilst recycling is the element which receives the most exposure it is actually the last option available and should never be the prime target in anyone's battle to reduce waste.

It is our duty as individuals and as a company to initially attempt to Reduce usage. Then we should look to Reuse wherever possible and finally, only after these two processes have been exhausted, should we consider Recycling.

–Reduce
–Reuse
–Recycle

REDUCE, REUSE AND RECYCLE.

ASSESSMENT CONSIDERATIONS

The following necessary assumptions and considerations were made during the course of the Life-Cycle Analysis:

- Manufacture of the furniture components was assumed to take place in the same factory in which the raw materials were processed, due to a lack of case-specific data.
- The transport of all materials, components and finished products was assumed to be via 16-32t Euro 6 lorries.
- All LCA data was modelled using the IMPACT 2002+ (v2.06) method.