

## Case Study



# Woodlands Care Group.

**Westhoughton,  
Bolton.**

**Date: 2015**

### **The requirement**

**Bedroom, dining, communal area  
furniture**

Type of care: Residential or nursing care,  
dementia care, assisted living

Woodlands Care Group is welcoming residents to its Woodlands Care Home, with a vision to offer specialised dementia care within a themed, stimulating environment. The striking new purpose-built facility is divided into 4 areas, each independent, with lounge, kitchen and dining areas to enable a feeling of smaller family living, whilst being well equipped to assist with impairments that occur with old age and dementia.

---



Woodlands delivers a first class patient experience within its themed rooms – including 'Beach room, Tea Room, Dressing room, Indoor garden room, Boat room, Butterfly room and Howfen Snug' with a focus on colour, stimulation therapies and objects that relate to memories. The 'Beach room', for example, has a holiday theme, stimulating memories of past family holidays, with areas of colour and objects with tactile and visual stimulus. The 'Butterfly room' has been designed to stimulate an individual in the palliative or frail stages of dementia. With a focus on walls and ceilings which are both bright and interesting, an individual in the stage of palliative dementia may be positioned in a lay back position, and Woodland's interior specialists have considered how to add interest to the ceilings, using light nets with hanging butterflies and birds to create interest.

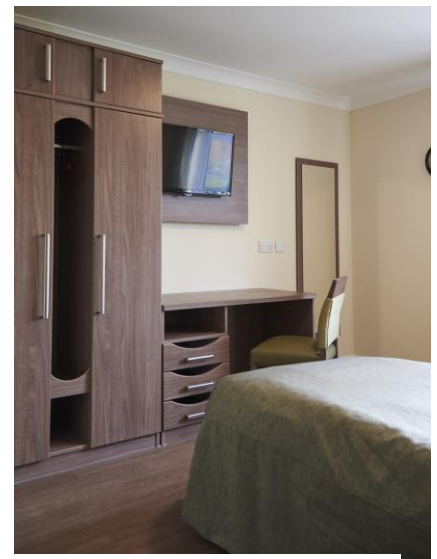
The 55-bed home has been specifically designed to provide comfortable, friendly and homely living, incorporating many important principles that support the care being provided. Each en-suite bedroom is equipped with specialist dementia furniture, including stylish Teal wardrobes with open hanging space to help residents recognise their own belongings and dressing tables with scoop front drawers.



According to home manager Janet Hope "We decided that the colours allowed us to mix and match and also think about infection control of materials for cleaning purposes. 'Velvare', the Teal dementia chair, with its orb armrests is helpful for mobilising residents and has been a great success. Everyone comments about the uniqueness of style and quality'.



Velvare is a distinctively styled, ergonomic lifestyle chair created by international designer Jon Crawford, with features designed to suit elderly and specialist dementia care. The innovative 'orb' handgrips are both tactile and supportive and designed to aid 'grip strength' exercises, proven to benefit hand osteoarthritis and injury recovery. Velvare also features an ergonomically designed profiled and supportive high back and assists in the 'sit-to-stand' movement in which seat height, armrests and clearance for foot positioning all assist with activities of daily living.



Galloway mid back armchairs are installed throughout the scheme, guaranteed to create a comfortable and supportive seating environment, allowing residents' to relax in age-appropriate, yet luxurious waterproof fabrics which help create a 'hotel style' appearance. Contemporary 'Tuscany' armchairs appear in the 'Butterfly room', while stylish easy chairs such as 'Atlas' and 'Zenda' offer high, supportive backs with lumbar support and help to create a refreshing, premium interior.

Woodlands chose Teal's 'Christie' 2-seater sofa and matching high back chair, a stylish, contemporary chair with supportive high back, which provides the correct level of support for long periods of sitting, with raised arms – easy to grip for rising and generous seating area.

Woodlands chose Teal's 'Christie' 2-seater sofa and matching high back chair, a stylish, contemporary chair with supportive high back, which provides the correct level of support for long periods of sitting, with raised arms – easy to grip for rising and generous seating area.

Communal areas feature 'Avenue' dining chairs with ski base legs, in luxurious, waterproof fabrics and contrasting dark stain frames, which appear throughout the dining areas.





## Teal

Branch Road  
Lower Darwen  
Lancashire  
BB3 0PR  
T +44 (0) 1254 688210  
E sales@teal.co.uk  
W teal.co.uk



# Customer Profile

## Woodlands Care Group

- Woodlands care home offers specialist care with independent, lounge, kitchen and dining areas to enable a feeling of smaller family living, whilst being well equipped to assist with impairments that occur with old age and dementia.
- Dementia areas feature naturally lit areas with comfortable, friendly and homely living and support for residents requiring specialist dementia care.

### Products specified:

Velvare ergonomic Lifestyle chairs – mid and high back

Christie high back chairs

Tuscany armchairs in Butterfly room

Galloway family comprising high back armchairs and mid back 2-seater sofas.

Avenue ski leg dining chairs

Atlas high back chair

Zenda designer high back wing armchair

Circular dining and coffee tables with contrast edge detail